



# Field Agent

## Turn Your ShotSpotter Data into Actionable Decisions. Get Answers — Instantly.

### Too Much Data, Too Little Time

ShotSpotter data holds the answers your agency needs — but getting to them means filters, exports, and manual analysis that consume valuable staff time. A patrol officer heading into a shift, a supervisor planning a weekend deployment, and a commander preparing for CompStat all need different things from the same data. And when every decision faces scrutiny — from resource deployment to intervention strategies — exploring trends, comparing date ranges, analyzing clusters, and evaluating activity near schools, parks, and businesses shouldn't start from a blank page.

### What Field Agent Does

#### Ask in Plain Language

Field Agent is a conversational companion that allows users to ask questions — either by voice or text — in plain language and have the system retrieve, analyze, summarize, map, chart, or export relevant data on their behalf.

#### Maps & Visualizations

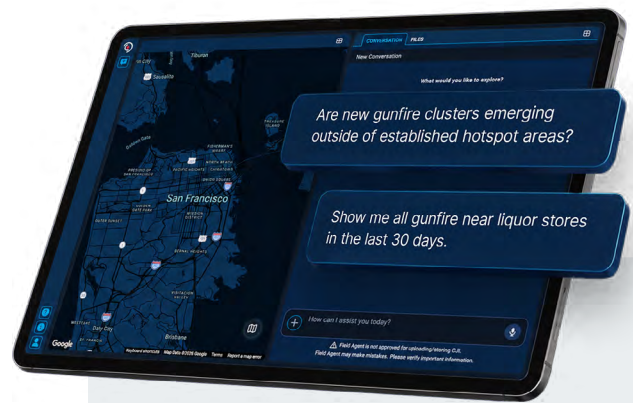
Field Agent can place incidents, points of interest, clusters, incident markers, color-coded layers, or generated geospatial shapes. Users can manage map layers and output.

#### Charts & Heat Maps

Field Agent can create charts, hotspot-style analyses, and heat maps. It can also generate spatial clusters and identify high-activity areas.

#### Reports & Briefings

Field Agent can create reports and executive summaries using the data and analysis. Reports can include key findings, temporal patterns, geographic patterns, points of interest, and operational considerations.



#### EXAMPLE PROMPT 1

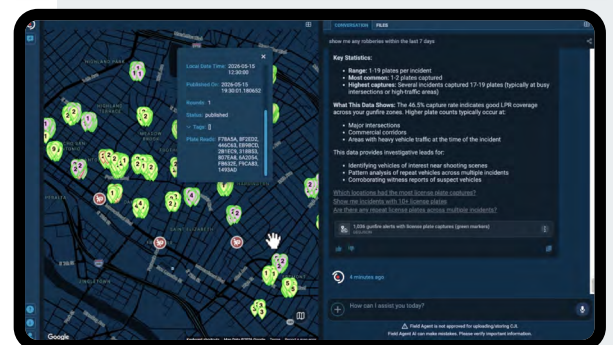
The area near Main and Oak St is a hot spot for criminal activity. Are there any ShotSpotter activations within the past 30 days, in that general vicinity and are there any correlations with proximity to points of interest?

#### EXAMPLE PROMPT 2

I have a community meeting tonight with citizens who are concerned about gunfire on the east side of town. Prep me for the meeting with key insights, likely areas of concern for citizens and suggestions for how to respond to them, positive trends, and a summary of talking points in a downloadable brief.

#### EXAMPLE PROMPT 3

Create an intelligence briefing on the most active gunfire clusters over the last 30 days, including repeat locations, peak days and times, high-round-count incidents, nearby schools or public gathering places, and any patterns patrol units should know before deployment.



# Built for Every Role in Your Agency

 Patrol Officers |  Detectives & Investigators |  Crime / Intel Analysts |  Command Staff

## Exports

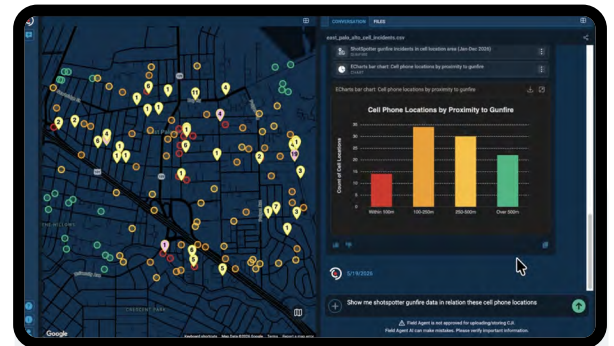
Field Agent can create CSV exports that can be opened in Excel or other tools. It can also export map layers as GeoJSON and shapefiles, and charts as PNG or PDF files.

## ILS & Audio

Field Agent can generate standard ILS reports for relevant incidents and play incident audio when available. Audio playback is available in Field Agent conversations.

## Additional Advantages

- ✔ **Supported file uploads** CSV, Shapefile, KML, GeoJSON, and JSON files can be uploaded to a conversation for analysis, mapping, comparison, and reporting.
- ✔ **Data sources** ShotSpotter gunfire data; ResourceRouter crime data (authorized users); PlateRanger license plate reads associated with gunfire incidents (authorized users); OpenStreetMap points of interest and boundaries; agency-provided geodata.
- ✔ **Conversation sharing** Users can share a conversation as a read-only snapshot with other authorized Field Agent users from their agency.
- ✔ **Source transparency** Users can ask Field Agent where it pulled data from or what source it used for any answer.
- ✔ **AI engine** Field Agent uses Anthropic's Claude to understand questions and conduct analysis.
- ✔ **Languages** English, Spanish, and Portuguese are supported across the Field Agent interface and conversational experience.



## Field Agent Benefits

- ✔ Faster briefings and shift preparation
- ✔ Instant operational and analytical insights
- ✔ Voice or text — ask however you work
- ✔ Decision support for deployment and planning
- ✔ Briefing-ready outputs for leadership and community meetings
- ✔ Less manual work, more time on mission

See how Field Agent can turn your data into answers, decisions, and action.

[fieldagent.soundthinking.com](https://fieldagent.soundthinking.com)

