

# Case Management that Helps Improve Clearance Rates and Build Courtroom-Ready Cases

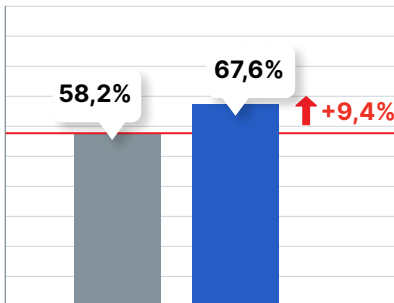
## The Limitations of Traditional Systems

For investigative case management, police departments have traditionally relied on under-powered RMS modules and homegrown or manual systems. These approaches lack the analytics, collaboration tools and workflow engine detectives need to solve cases quickly. As a result, clearance rates suffer, and serial offenders remain free to commit more crime. Many departments may be unaware of the advantages a modern solution can employ to optimize investigations and increase the efficiency of investigative work.

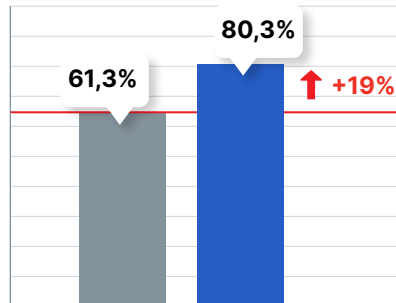
## A Smarter Approach to Investigative Case Management

CaseBuilder is a smarter investigation management platform that enables investigative teams to efficiently organize and store case information, track and prioritize assignments, optimize resources, submit materials to prosecution, and more. The platform's investigative, analytic and reporting tools make detectives more efficient and effective – from the office or the field – helping you keep investigations moving forward. As a result, law enforcement agencies of any size can better protect the community and achieve higher clearance rates, especially for violent crimes and shootings.

## Contributes to Homicide Clearance Rate Improvement



**Large City PD**  
 ● 5 years before CaseBuilder  
 ● 5 years after CaseBuilder



**Large City PD with CaseBuilder Vs. National Average**  
 ● National Average (2015-2018)  
 ● CaseBuilder Average (2015-2019)

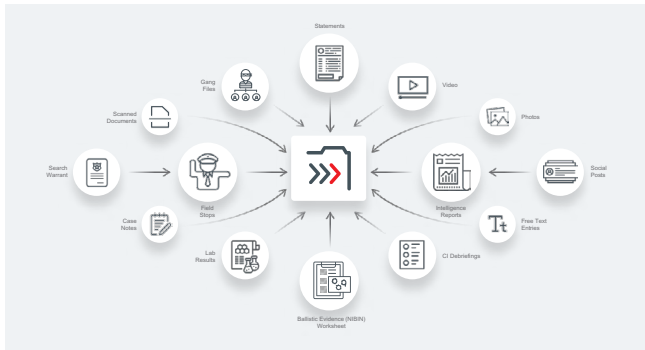
### CaseBuilder's Innovative Approach

- ✔ **Digital Case Folder:** Everything for a case is organized and stored in one structured and searchable digital case folder.
- ✔ **Investigative Analysis:** Search and analytical tools help detect relationships between people, places and evidence to more quickly identify patterns and solve cases.
- ✔ **Collaboration Tools:** Share and receive alerts on new evidence and information with co-workers, other departments and the DA's office.
- ✔ **Workflow Guidance:** Pre-configured checklists of action items help guide different types of investigations but are flexible so agencies can work the way they are used to.
- ✔ **Real-Time Visibility & Reporting:** Supervisors can access additional tools to manage workload and assess case status, providing them with the data they need to report out at briefings and inform command staff.

# How CaseBuilder Works

From crime scene to conviction, CaseBuilder automates processes, helping law enforcement find patterns, assess solvability, track follow-up activities, review progress and build courtroom-ready cases.

## 1. Capture Everything in One Place



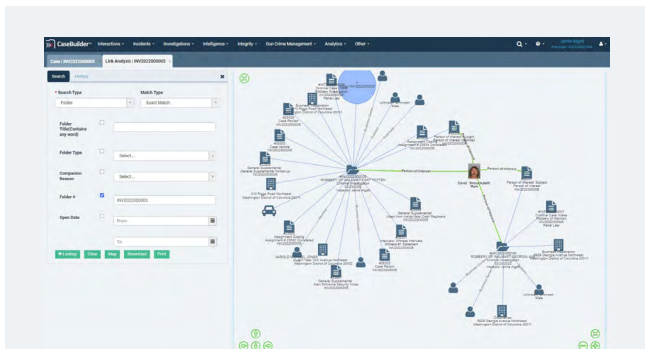
Turn tips, leads, incidents and field intelligence into a digital case folder. Then, easily document investigative activities, upload scene photos, record observations, archive video and more—in one central source of truth.

## 2. Organize Instantly

ID#	Type	Subject	Activity Date	Author	Req. Doc.	Approval Status	Attach.	Assign.
12014	Critical Case Index	Railway Investigation	02/07/2022 0900	Jarvis Aggett		Approved		Assign
12017	Interview	Witness Interview	02/09/2022 0900	Jarvis Aggett		Approved		Assign
12020	Case Review	Case Review	02/09/2022 1045	Jarvis Aggett		Approved		Assign
12023	Assignment	Interview Block Manager	02/09/2022 1445	Jarvis Aggett		Approved		Assign
12024	Assignment Change	Assignment # 21002 Completed	02/09/2022 1445	Jarvis Aggett		Approved		Assign
12024	Assignment	Assignment Pending	02/09/2022 1445	Jarvis Aggett		Approved		Assign
12025	Assignment Change	Assignment # 21004 Completed	02/09/2022 1445	Jarvis Aggett		Approved		Assign
12027	Assignment	Man-Offense Security Index	02/09/2022 1300	Jarvis Aggett		Approved		Assign
12028	General Supplemental	Video from Inside Near Cash Registers	02/09/2022 1400	Jarvis Aggett		Approved		Assign
12029	General Supplemental	General Supplemental/Pending	11/18/2022 1400	Jarvis Aggett		Approved		Assign

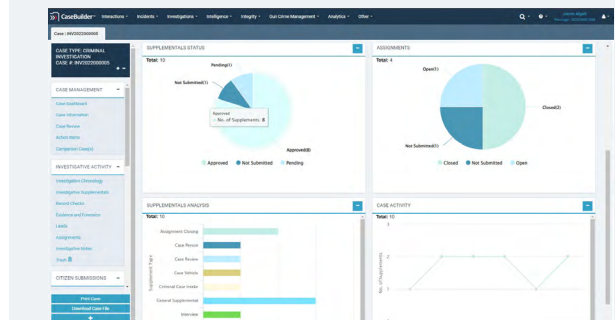
Automatically turn information and investigative activities into the building blocks of a case as the system organizes complex information into chronological lists and indexes.

## 3. Solve Cases Faster



Generate immediate insights through link analysis to uncover patterns between people, places, evidence and cases that were time consuming to piece together before.

## 4. Get Courtroom-Ready



Through your case folder dashboard, automatically route casework through review and approval processes. Easily create and annotate diagrams, charts and maps with markups and hyperlinks to develop interactive presentations.

## Is Your Case Management Software as Smart as CaseBuilder?

- Case Chronology
- Link Analysis
- Property and Evidence
- Confidential Informant Management
- Full Gang Management
- Tip Corroboration
- Organized Crime Ring Insights
- ShotSpotter Integration
- NIBIN Lead Management
- Publish Case for DA
- Audit Trail
- Unlimited Users
- Mobile Ready
- 24/7/365 Secure and Compliant Case Access



To learn more about our SafetySmart Platform, scan the QR code or visit: [soundthinking.com/safetysmart-platform](https://soundthinking.com/safetysmart-platform)

