



Simplify the Complexity of Patrol Operations

Boost Productivity, Engagement and Safety with Patrol Operations Software

The Challenge of Patrol Operations

Agencies today are tasked with an impossible feat: maintain an efficient, data-driven police force in the face of staffing shortages, data silos, and outdated manual analytics reporting. Many agencies spend too much time and effort manually producing hotspot analysis reports to direct officers, resulting in quickly outdated, low-impact patrol plans that lack insights into officer activities.

Greater Community Impact

ResourceRouter is a comprehensive patrol operations solution that simplifies the complexity of patrol operations. Using automated, data-driven, and agency-created intelligence-led patrols to optimize resources, address crime issues, and enhance officer engagement, ResourceRouter ensures officers have the information they need to perform their duties safely and effectively while also providing insights into the impact patrol officers have in the community when they're not responding to calls for service.

With ResourceRouter, your agency can:



Give officers access to all the operational info they need in the field to do their job safely and effectively



Easily enable automated, data-driven patrols to enhance public safety

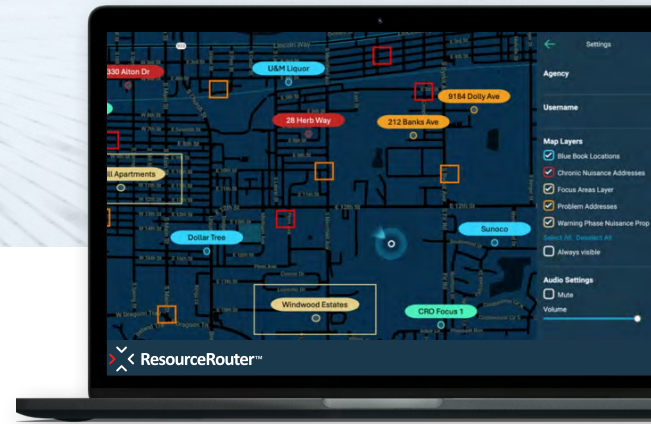


Gain insight on officer impact for better patrol decisions and meaningful transparency



I'm a firm believer that right now I can work with just 50 officers in a department budgeted for nearly 100, because we're using technology the right way. I don't believe technology replaces officers – but we lost 45% of our manpower, and ResourceRouter helped us fill that gap. It's probably one of the biggest game changers in my career."

Chief JOSE RIVERA, East Chicago Police Department



ResourceRouter Benefits

✓ PROACTIVE PATROL

ResourceRouter uses location-based crime data and on-crime external risk terrain data to generate patrol plans based on your jurisdiction's highest-risk and highest-need areas.

✓ RESPONSIVE PATROL

Custom ad-hoc deployment areas for specialized assignments can include links to other systems and reference documents like active warrant lists, etc.

✓ PATROL INSIGHTS

Generate patrol data and reports about where your patrol officers have the biggest impact on crime, along with other patrol time data.

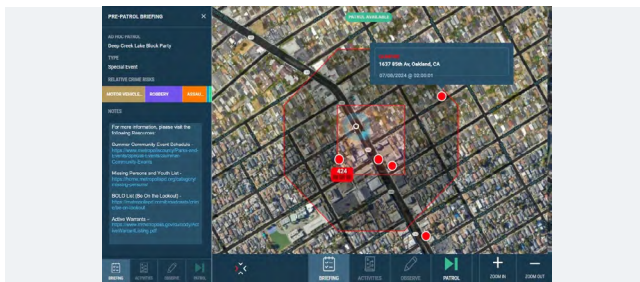
✓ PATROL INFORMATION

Agency-specific intel, location history, customizable map layers, and referenceable and actionable information at your officers' fingertips. Amplify officer safety and situational awareness while keeping officers focused where they should be—in the field.

Maximize Patrol Productivities

With ResourceRouter, agencies can better direct officers to the right place at the right time for the right amount of time maximizing visibility, deterring crime, and enhancing community safety.

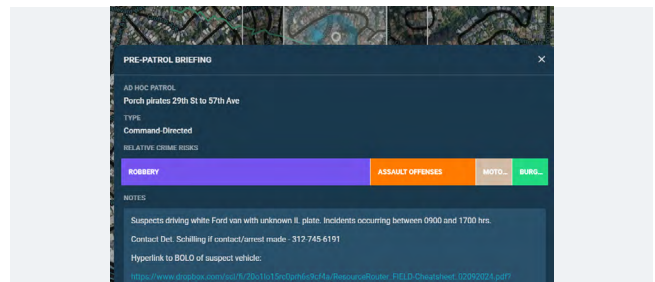
Proactive Patrol



How do your officers know where their patrol presence is needed most?

With ResourceRouter, officers know exactly where and why their patrol presence is needed most through automated, data-driven and intelligence-led assignments delivered daily by shift and beat.

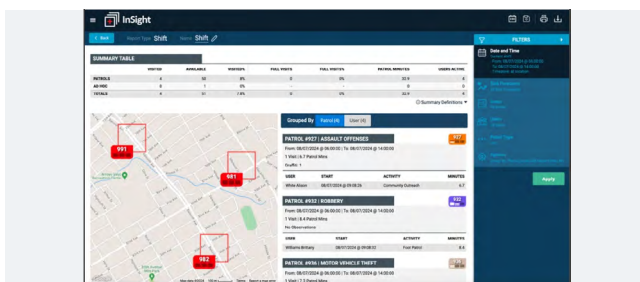
Responsive Patrol



Are you able to communicate additional assignments to officers in the field without relying on roll call, supervisor reminders, or email?

Improve efficiency and empower patrol with customized ad-hoc deployment areas for specialized assignments with links to other systems and reference documents.

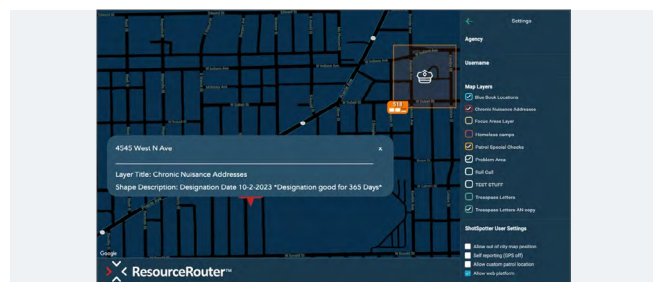
Patrol Insights



What are your officers doing when they're not actively responding to a 9-1-1 call?

ResourceRouter delivers clear, automated, CompStat-style reports to help analysts and supervisors answer this question confidently. Over time, this helps develop sustainable and effective patrol strategies for reducing crime and positively impacting public safety outcomes.

Patrol Information



Can your patrol officers easily access and share the information they need?

ResourceRouter helps agencies protect against the loss of institutional knowledge from seasoned officers with customizable map layers and referenceable and actionable information tailored to their agency and community needs within reach.

Take Control of Your Agency's Narrative with ResourceRouter

[REQUEST A CONSULTATION](#)

JOHN UNDERWOOD

Sales Development Director

junderwood@soundthinking.com



To learn more, scan the QR code or visit:
soundthinking.com/safetysmart-platform

